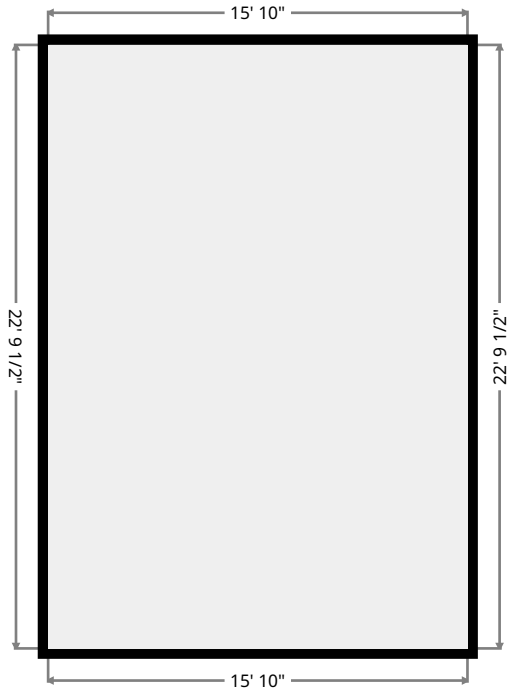
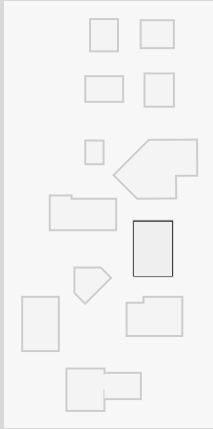


13410 Larchmere

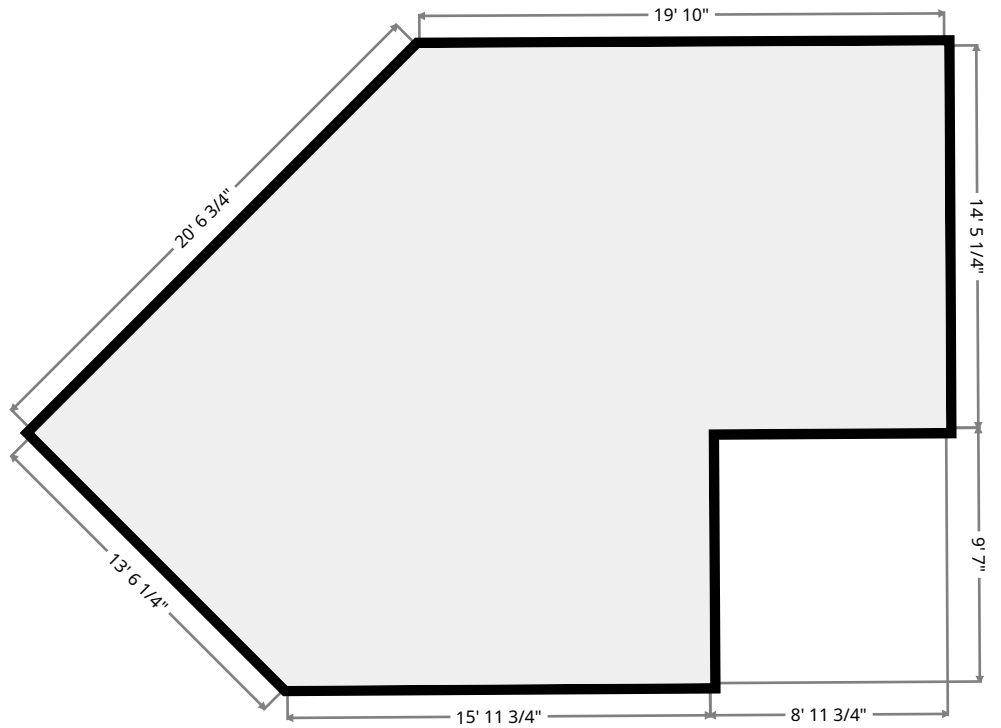
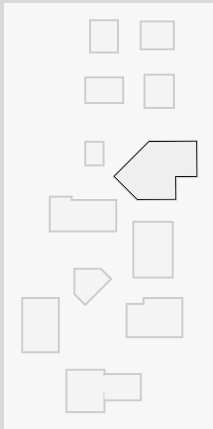
Family Room

Width: 15' 10"
Length: 22' 9 1/2"
Area: 361.18 sq ft
Perimeter: 77' 3 1/2"



Kitchen

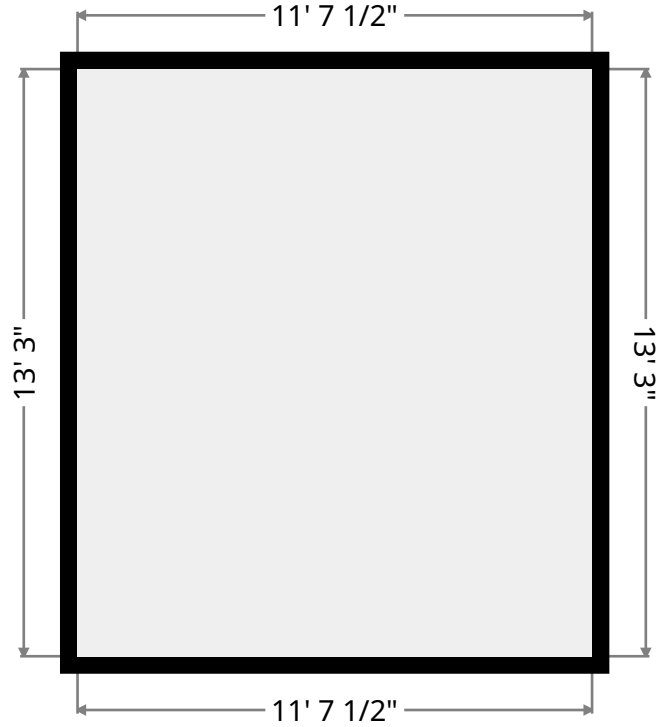
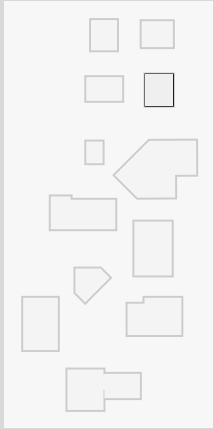
Width: 13' 6 1/4"
Length: 20' 6 3/4"
Area: 591.12 sq ft
Perimeter: 102' 10 1/2"
Ceiling Height: 8' 8 1/2"



13410 Larchmere

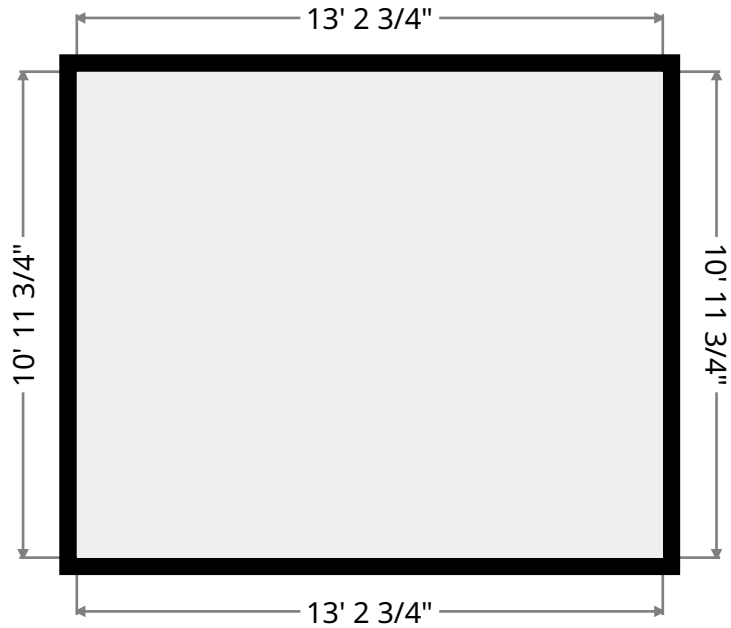
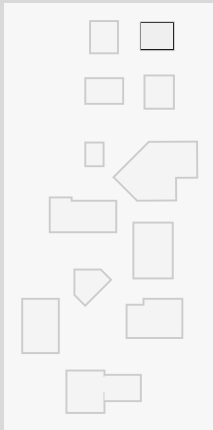
Dining Room

Width: 11' 7 1/2"
Length: 13' 3"
Area: 154.03 sq ft
Perimeter: 49' 9"



Sitting Room

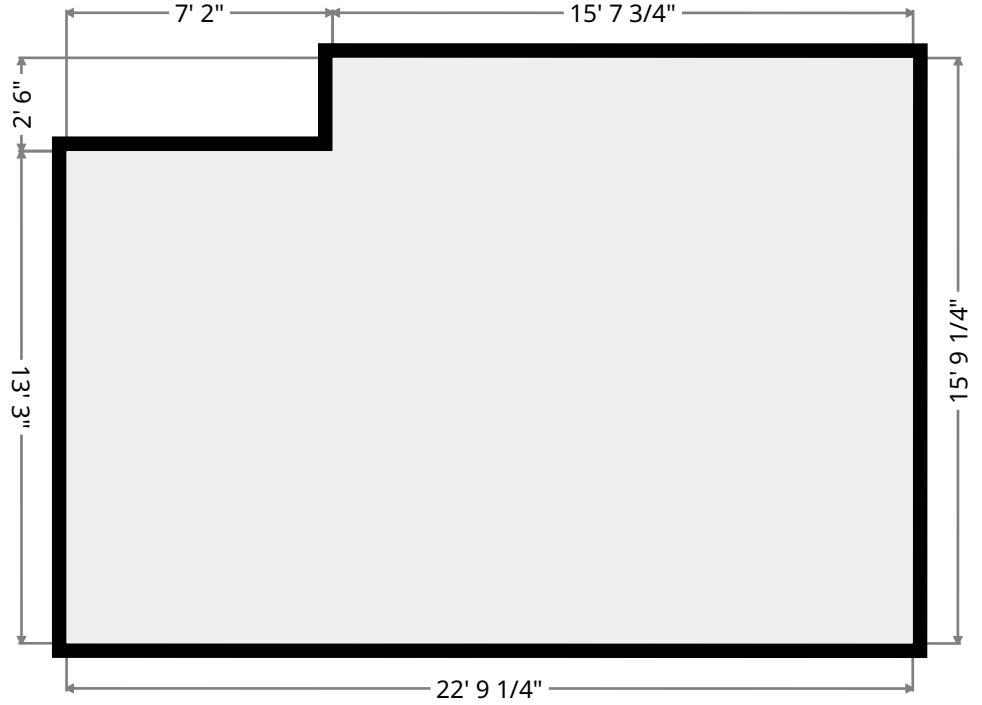
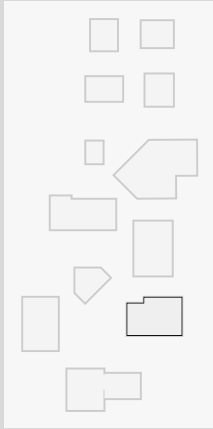
Width: 10' 11 3/4"
Length: 13' 2 3/4"
Area: 145.17 sq ft
Perimeter: 48' 4 3/4"



13410 Larchmere

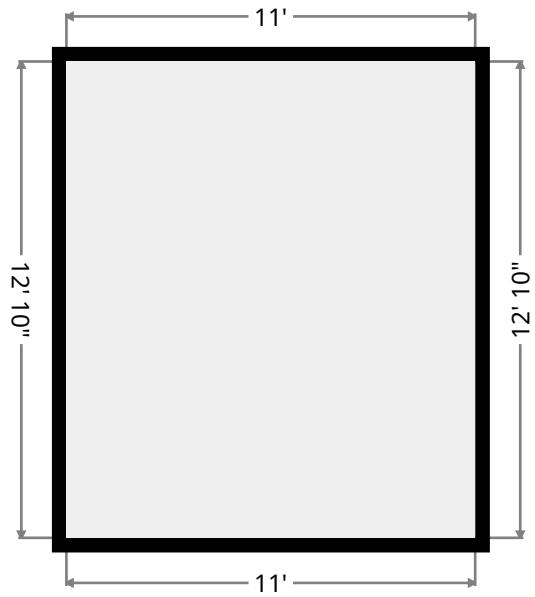
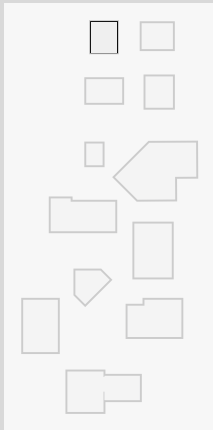
Master Bedroom

Width: 15' 9 1/4"
Length: 22' 9 1/4"
Area: 341.17 sq ft
Perimeter: 77' 1 1/4"



Bedroom

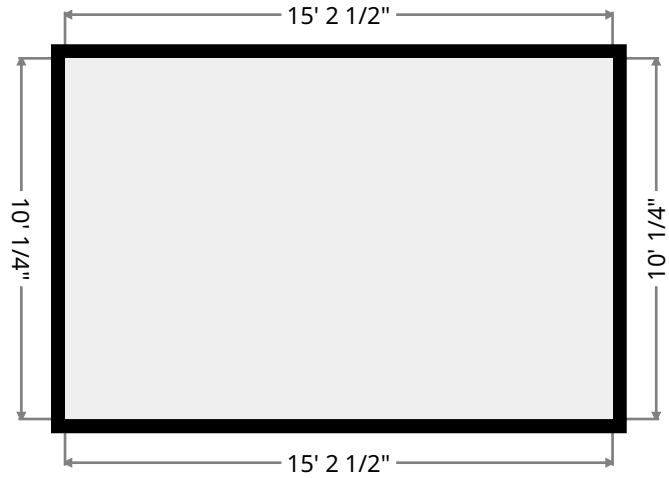
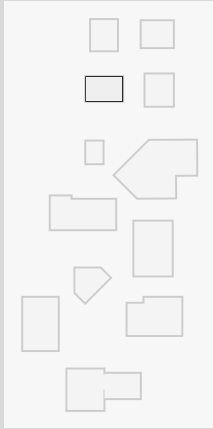
Width: 11'
Length: 12' 10"
Area: 141.12 sq ft
Perimeter: 47' 8"



13410 Larchmere

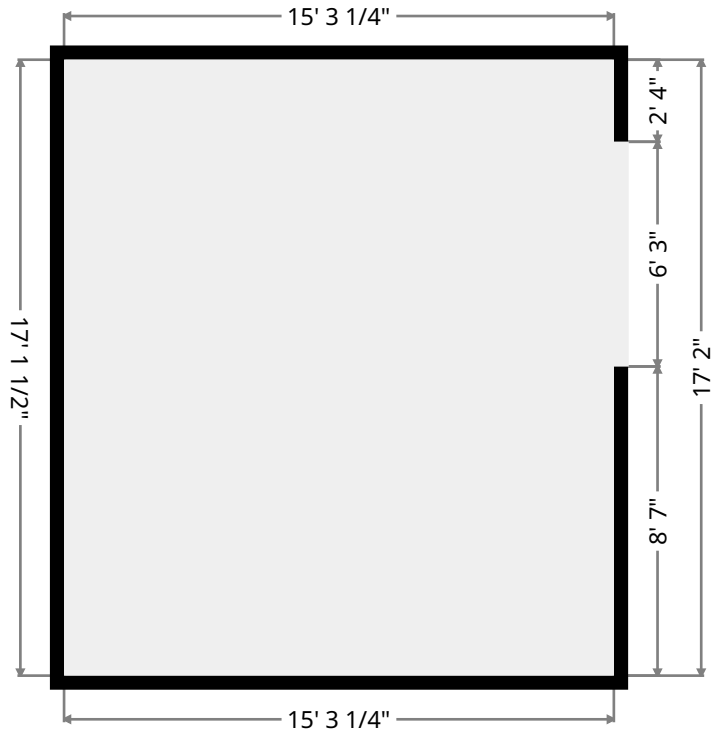
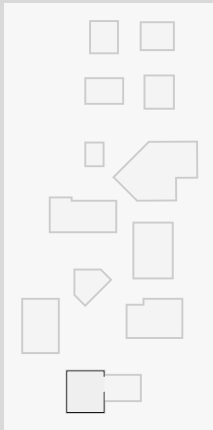
Bedroom

Width: 10' 1/4"
Length: 15' 2 1/2"
Area: 152.52 sq ft
Perimeter: 50' 5 3/4"



Bedroom

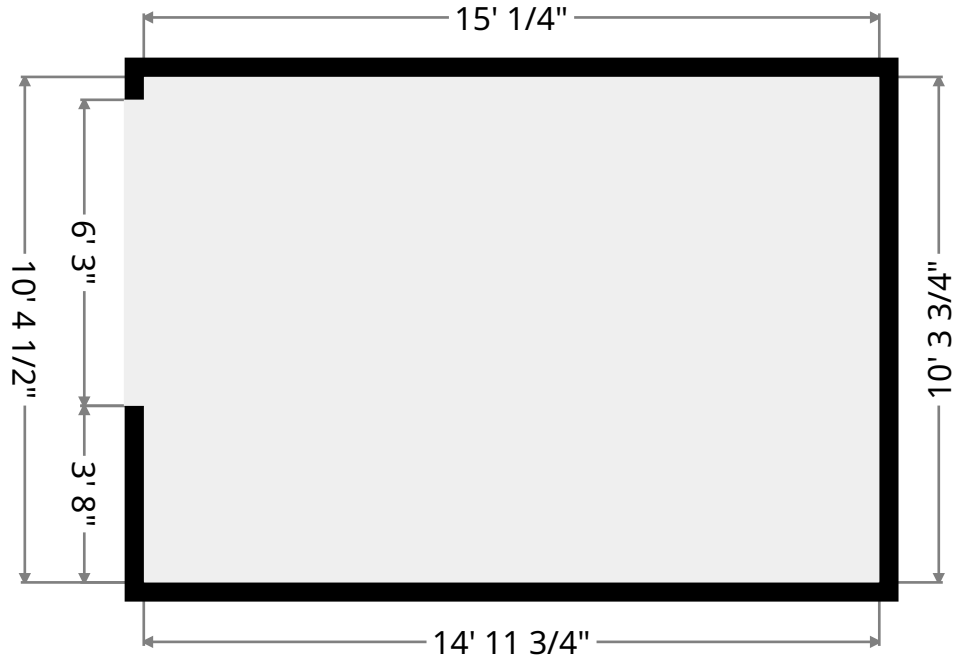
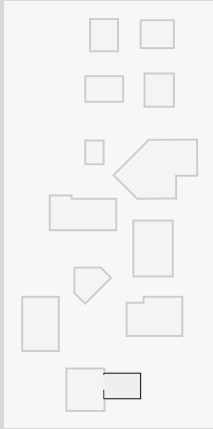
Width: 15' 3 1/4"
Length: 17' 1 1/2"
Area: 261.54 sq ft
Perimeter: 64' 9 1/2"



13410 Larchmere

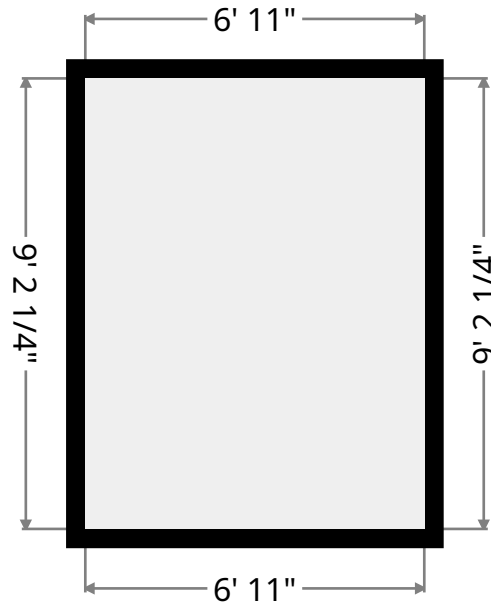
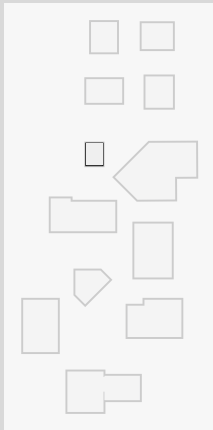
Living Room

Width: 10' 3 3/4"
Length: 14' 11 3/4"
Area: 154.86 sq ft
Perimeter: 50' 7 3/4"



Laundry Room

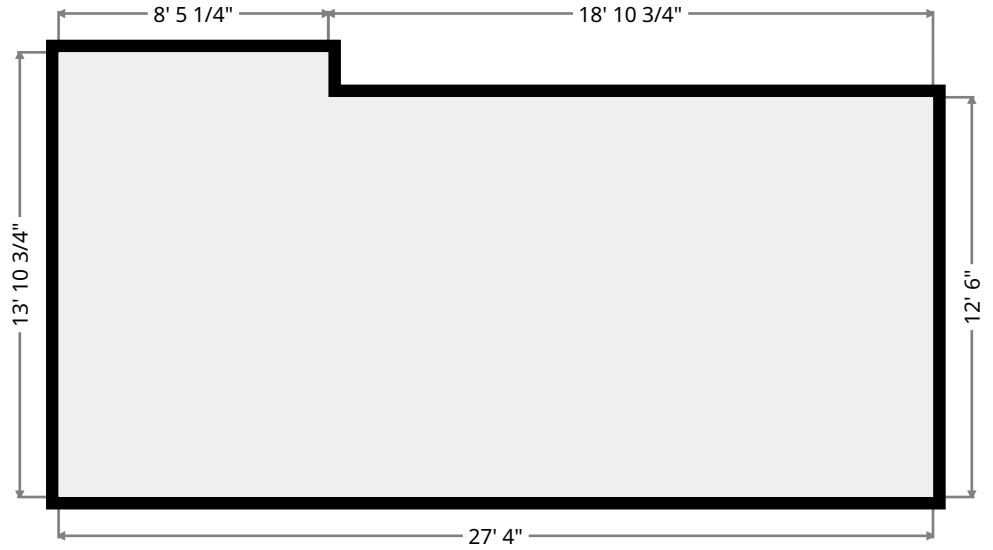
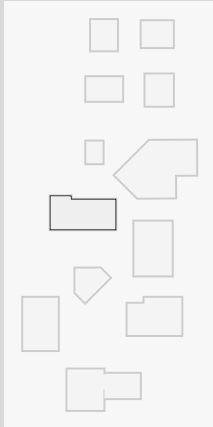
Width: 6' 11"
Length: 9' 2 1/4"
Area: 63.61 sq ft
Perimeter: 32' 2 3/4"



13410 Larchmere

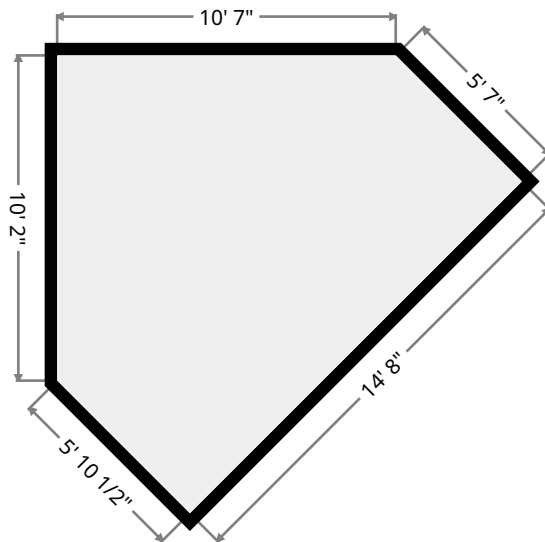
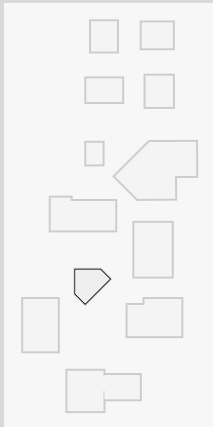
Media Room

Width: 13' 10 3/4"
Length: 27' 4"
Area: 353.47 sq ft
Perimeter: 82' 5 3/4"



Workout Room

Width: 5' 10 1/2"
Length: 14' 8"
Area: 137.75 sq ft
Perimeter: 46' 10 1/2"
Ceiling Height: 8' 8 1/2"



13410 Larchmere

Rec Room

Width: 14' 8 1/4"
Length: 22' 1 3/4"
Area: 325.10 sq ft
Perimeter: 73' 7 3/4"

