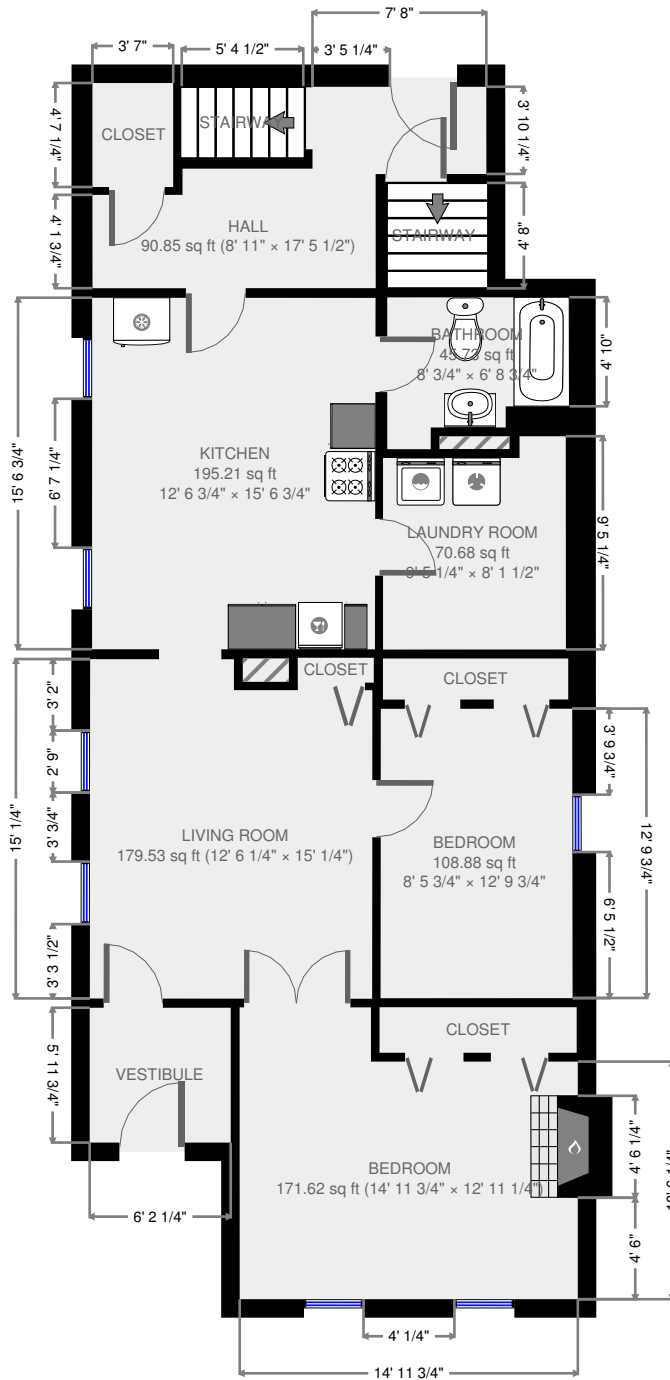


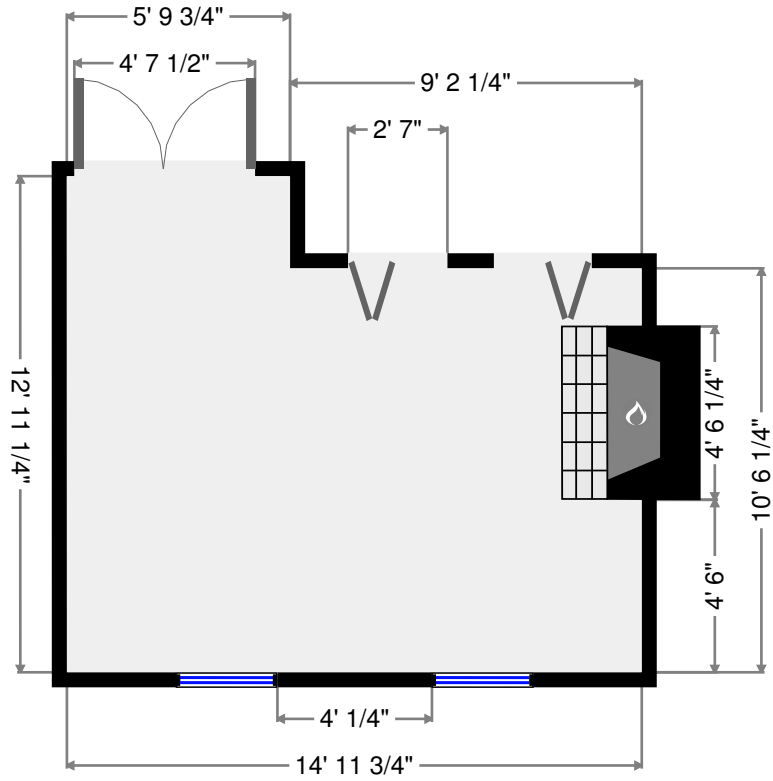
# 1st Floor



Dolan W28

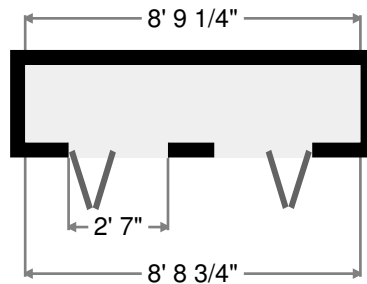
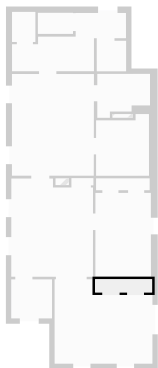
# Bedroom

Width: 12' 11 1/4"  
 Length: 14' 11 3/4"  
 Area: 171.62 sq ft  
 Perimeter: 55' 9 3/4"



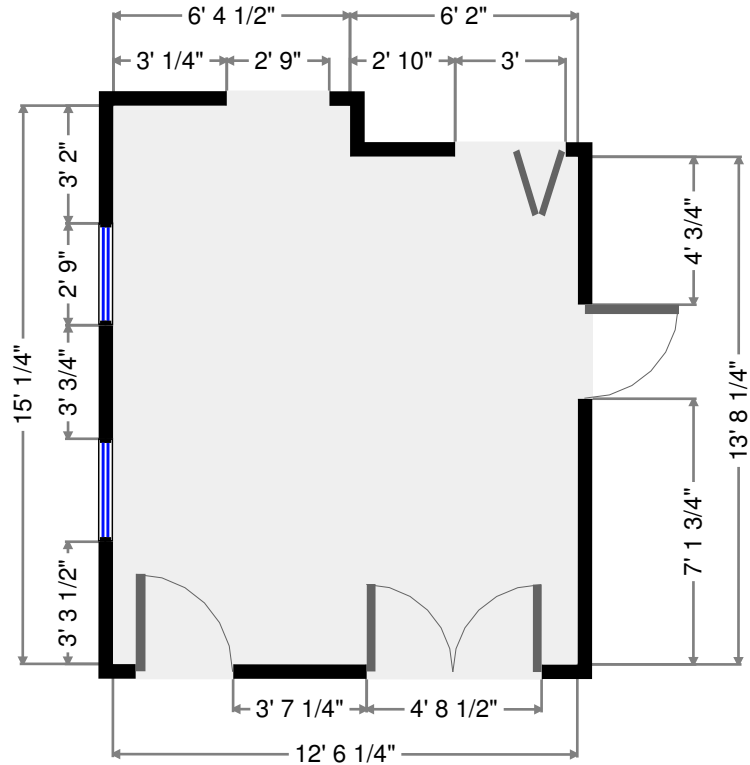
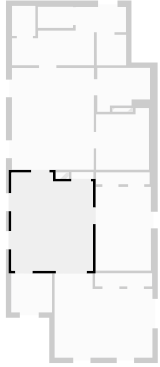
# Closet

Width: 2' 1/4"  
 Length: 8' 9 1/4"  
 Area: 17.59 sq ft  
 Perimeter: 21' 6"



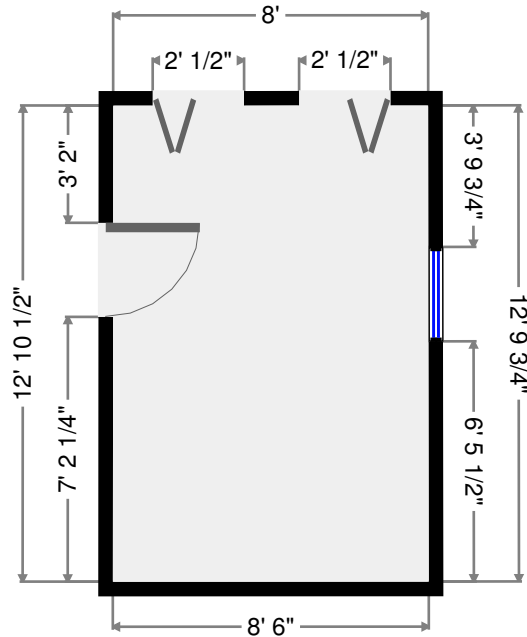
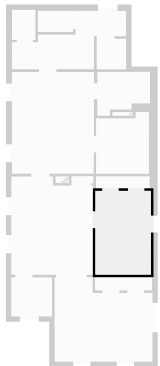
# Living Room

Width: 12' 6 1/4"  
 Length: 15' 1/4"  
 Area: 179.53 sq ft  
 Perimeter: 55' 3/4"



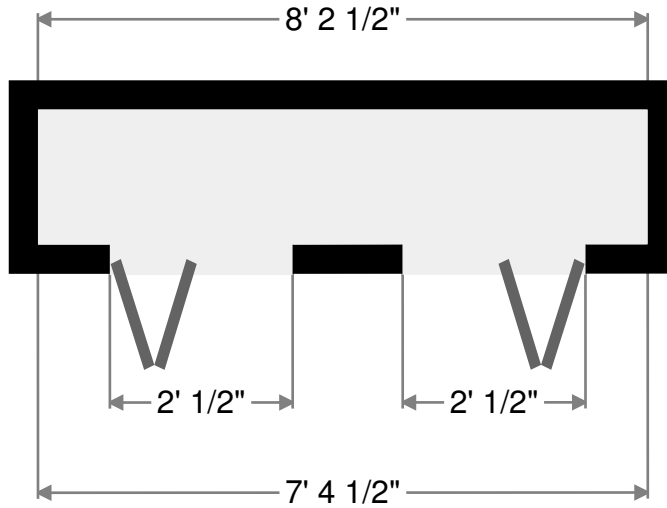
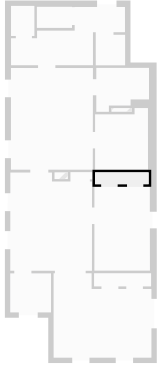
# Bedroom

Width: 8' 5 3/4"  
 Length: 12' 9 3/4"  
 Area: 108.88 sq ft  
 Perimeter: 42' 7 1/2"



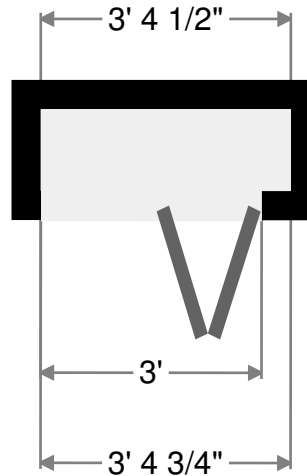
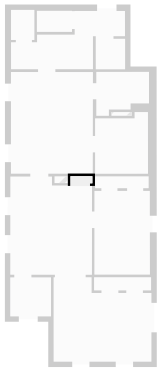
# Closet

Width: 1' 9 3/4"  
Length: 8' 2 1/2"  
Area: 14.91 sq ft  
Perimeter: 20' 1/2"



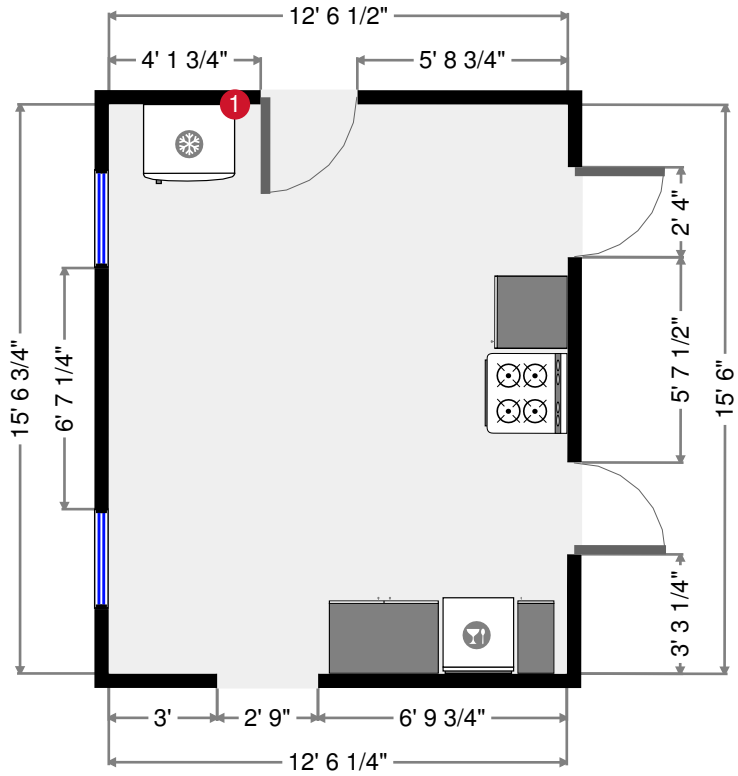
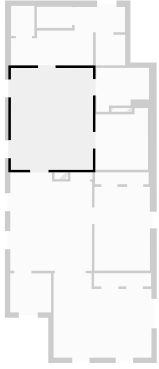
# Closet

Width: 1' 1 1/2"  
Length: 3' 4 1/2"  
Area: 3.71 sq ft  
Perimeter: 8' 11 1/4"



# Kitchen

Width: 12' 6 3/4"  
 Length: 15' 6 3/4"  
 Area: 195.21 sq ft  
 Perimeter: 56' 2 1/2"



1

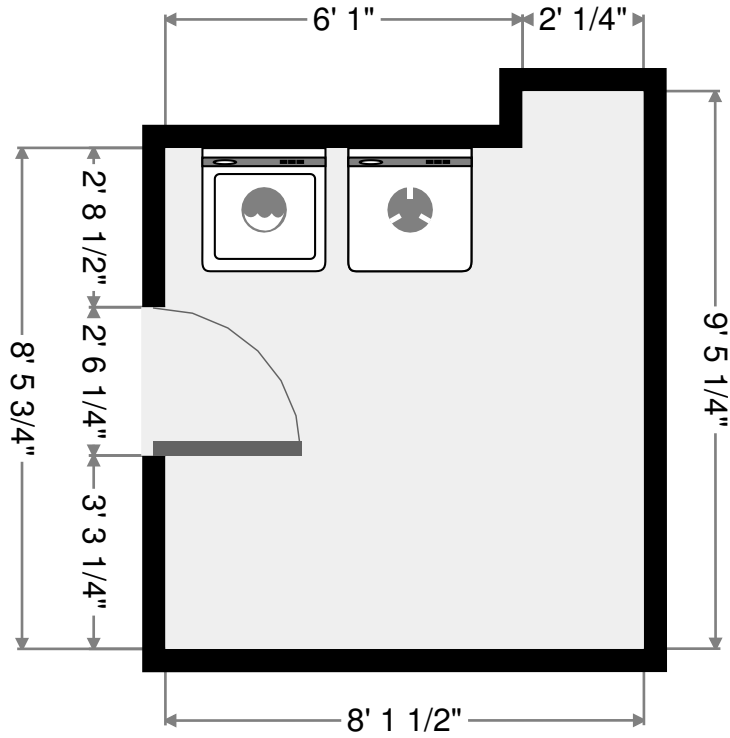
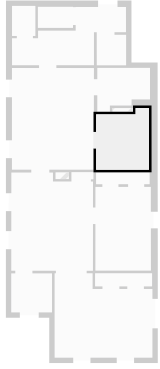


Single-door Refrigerator

- Height: 5' 5 1/4"

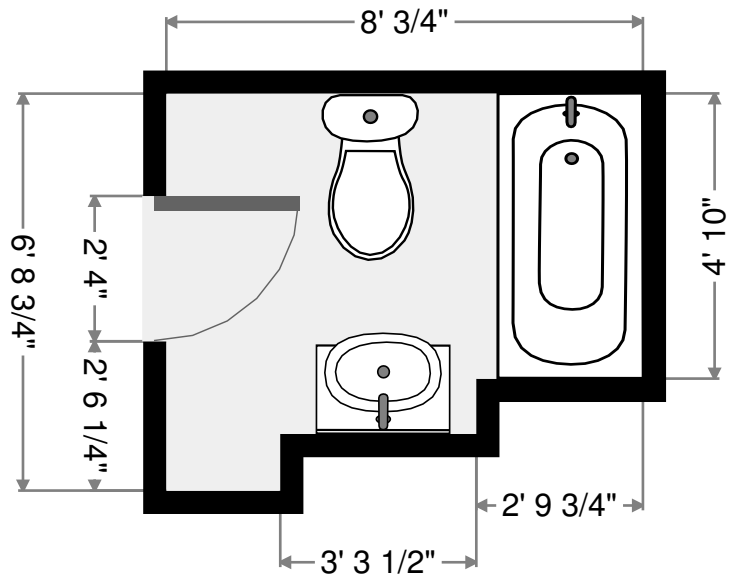
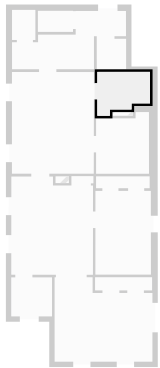
# Laundry Room

Width: 8' 1 1/2"  
 Length: 9' 5 1/4"  
 Area: 70.68 sq ft  
 Perimeter: 35' 1"



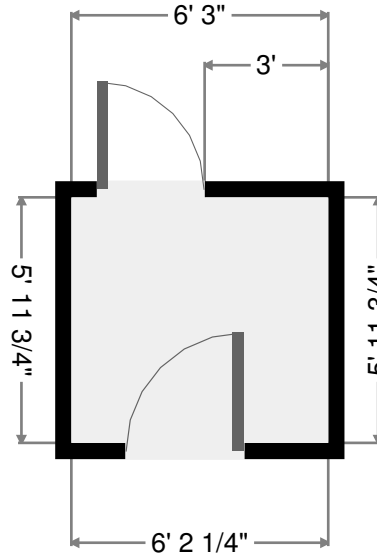
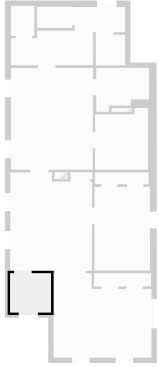
# Bathroom

Width: 6' 8 3/4"  
 Length: 8' 3/4"  
 Area: 45.73 sq ft  
 Perimeter: 29' 7"



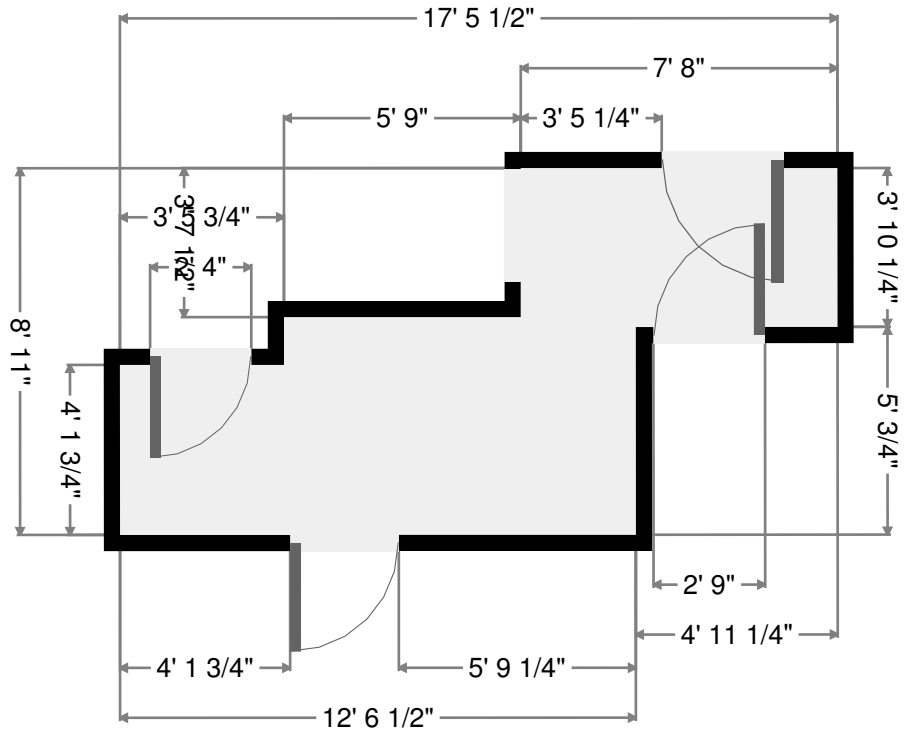
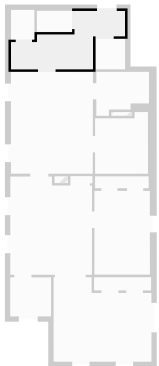
# Vestibule

Width: 5' 11 3/4"  
 Length: 6' 3"  
 Area: 37.30 sq ft  
 Perimeter: 24' 5 1/4"



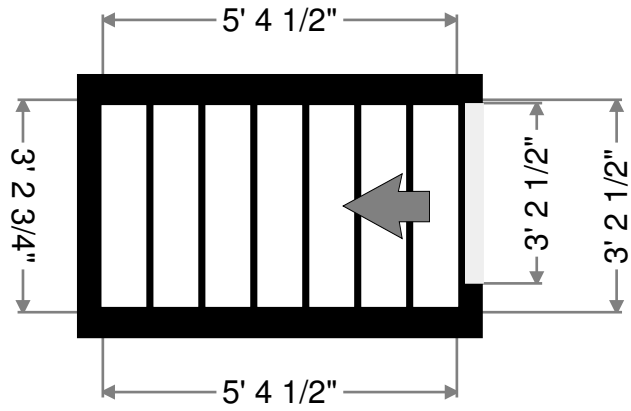
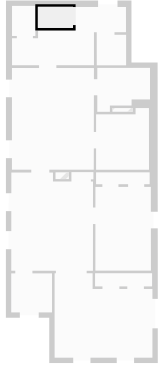
# Hall

Width: 8' 11"  
 Length: 17' 5 1/2"  
 Area: 90.85 sq ft  
 Perimeter: 52' 8 3/4"



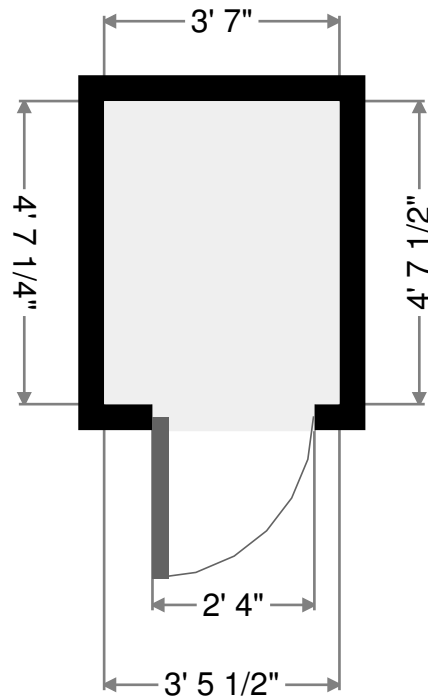
# Stairway

Width: 3' 2 1/2"  
Length: 5' 4 1/2"  
Area: 17.37 sq ft  
Perimeter: 17' 2 1/2"



# Closet

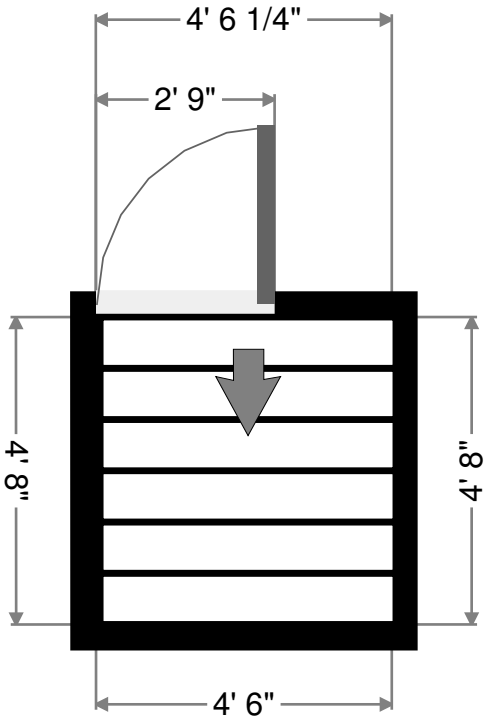
Width: 3' 7"  
Length: 4' 7 1/2"  
Area: 16.47 sq ft  
Perimeter: 16' 4 1/2"



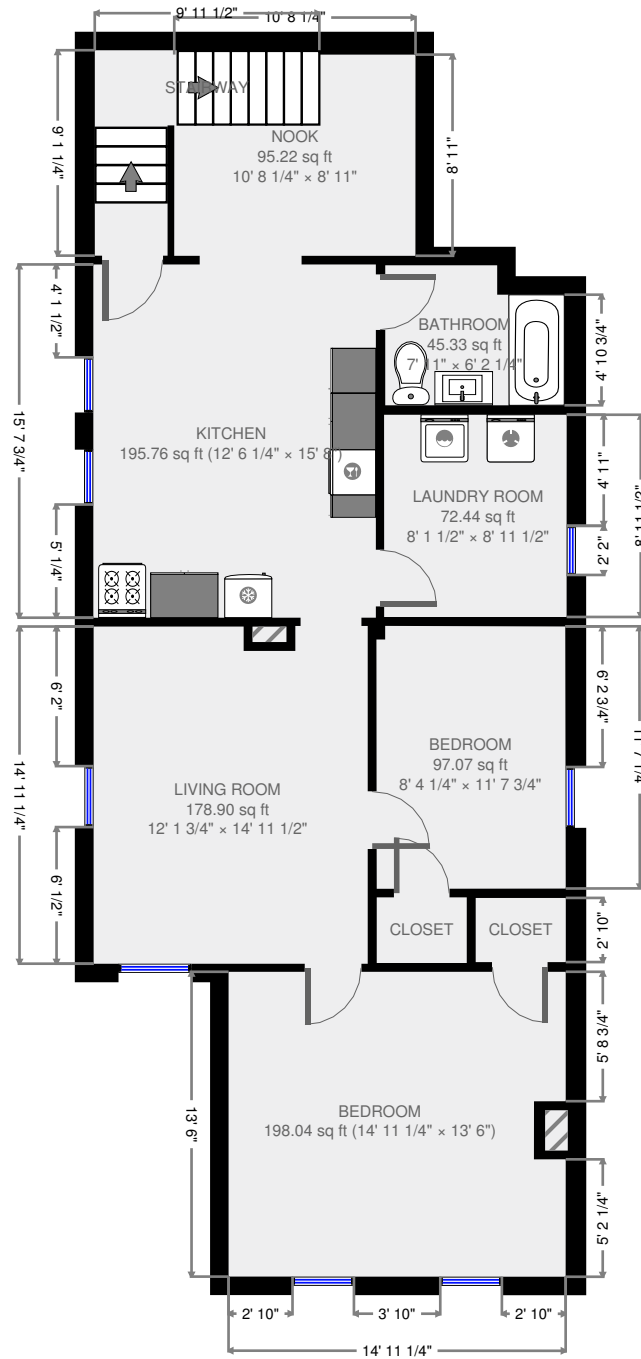


# Stairway

Width: 4' 6"  
Length: 4' 8"  
Area: 21.01 sq ft  
Perimeter: 18' 4"



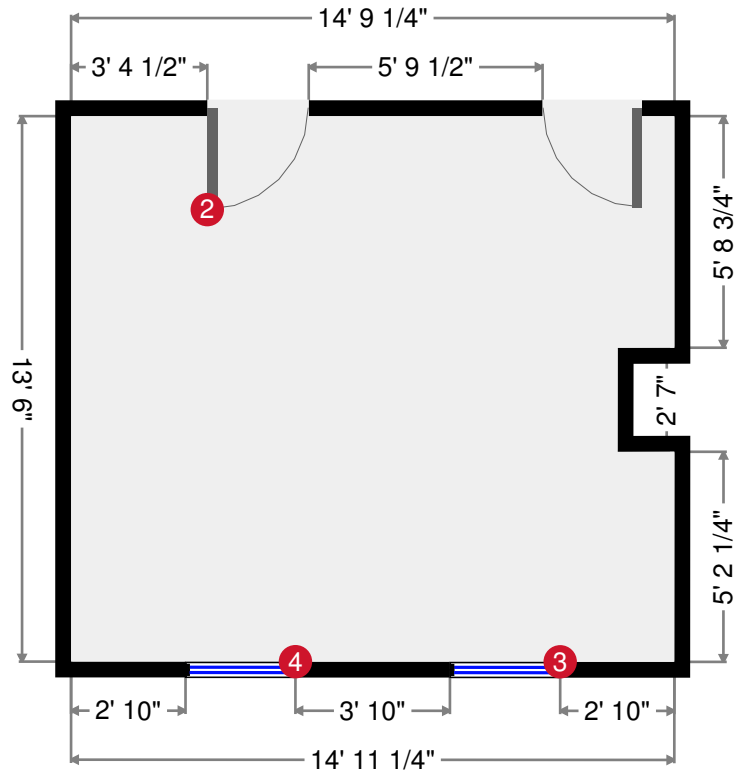
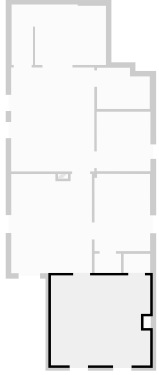
# 2nd Floor

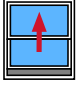
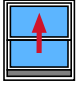


Dolan W28

# Bedroom

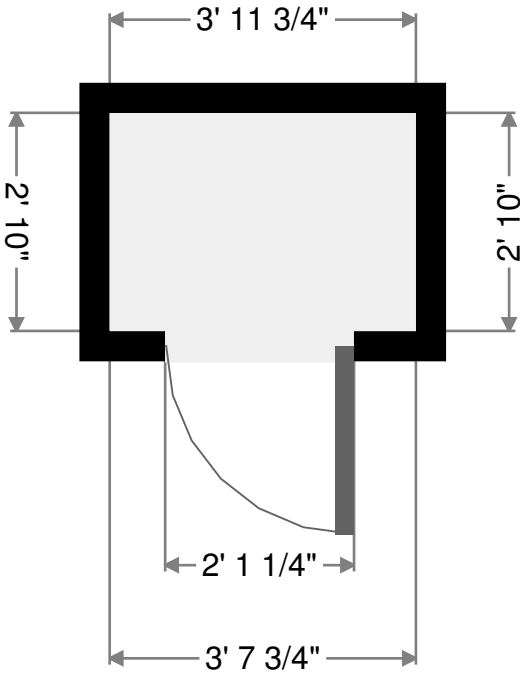
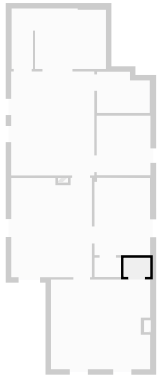
Width: 13' 6"  
 Length: 14' 11 1/4"  
 Area: 198.04 sq ft  
 Perimeter: 59' 8 1/4"



2		Hinged Door	- Height: 6' 9 1/4"
3		Hung Window	- Height: 5' 5" - Distance to Floor: 2'
4		Hung Window	- Height: 5' 4 3/4" - Distance to Floor: 1' 10 3/4"

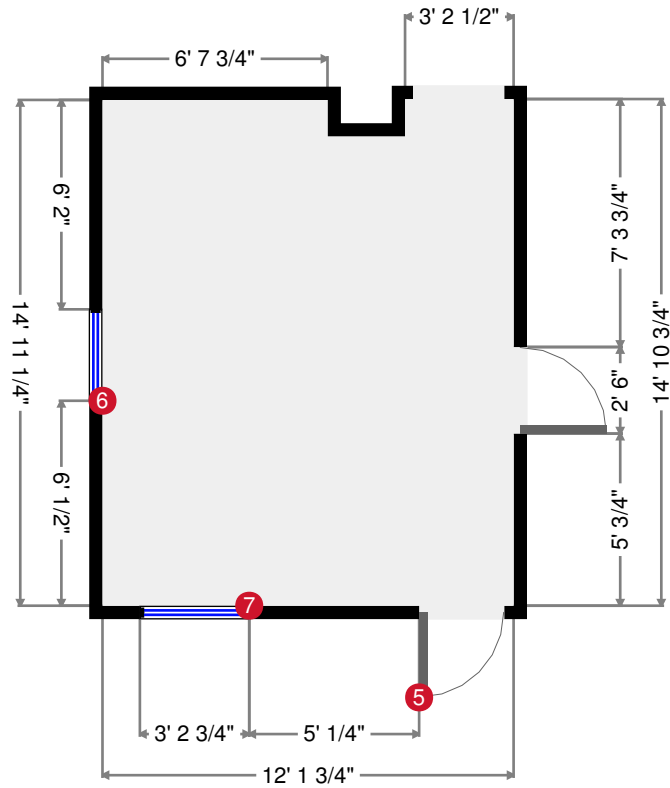
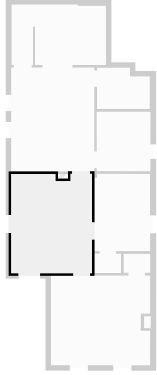
# Closet

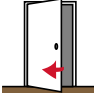
Width: 2' 10"  
Length: 3' 11 3/4"  
Area: 11.34 sq ft  
Perimeter: 13' 8"

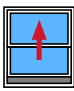



# Living Room

Width: 12' 1 3/4"  
 Length: 14' 11 1/2"  
 Area: 178.90 sq ft  
 Perimeter: 56' 4 1/4"



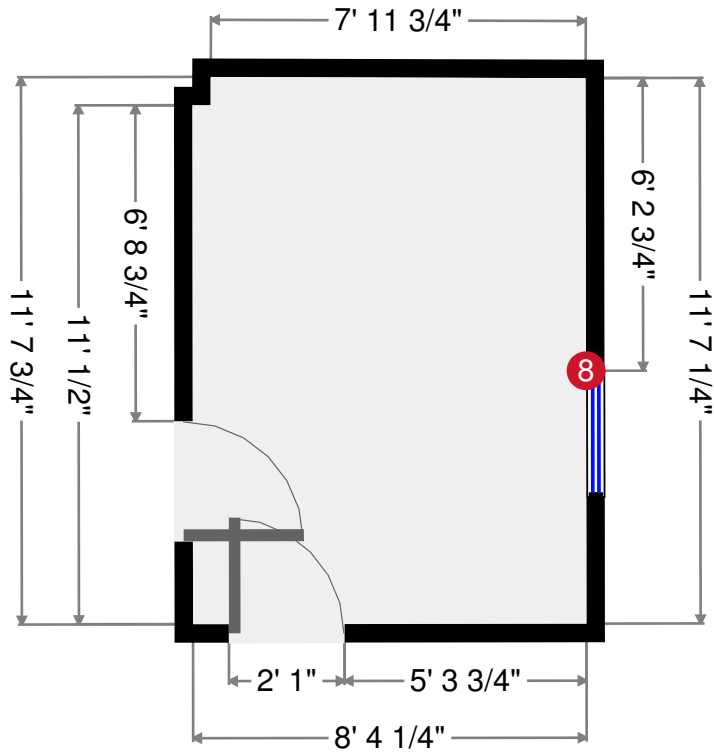
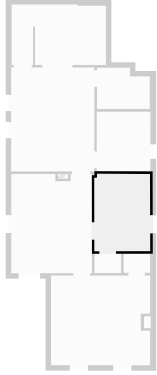
5  Hinged Door - Height: 6' 9 1/4"

6  Hung Window - Distance to Floor: 1' 10 1/2"

7  Hung Window - Height: 1' 7 3/4"

# Bedroom

Width: 8' 4 1/4"  
 Length: 11' 7 3/4"  
 Area: 97.07 sq ft  
 Perimeter: 39' 11 3/4"



8



Hung Window

- Height: 5' 5 1/4"

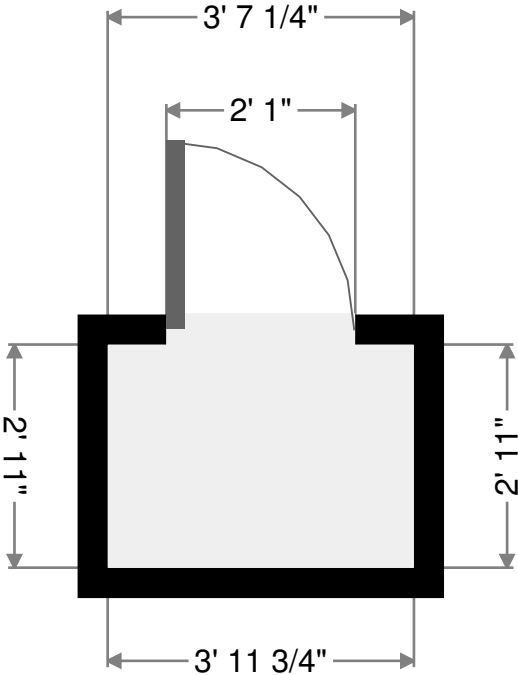
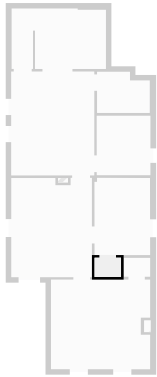
- Distance to Floor: 1' 10 1/4"

Dolan W28

2017-05-05

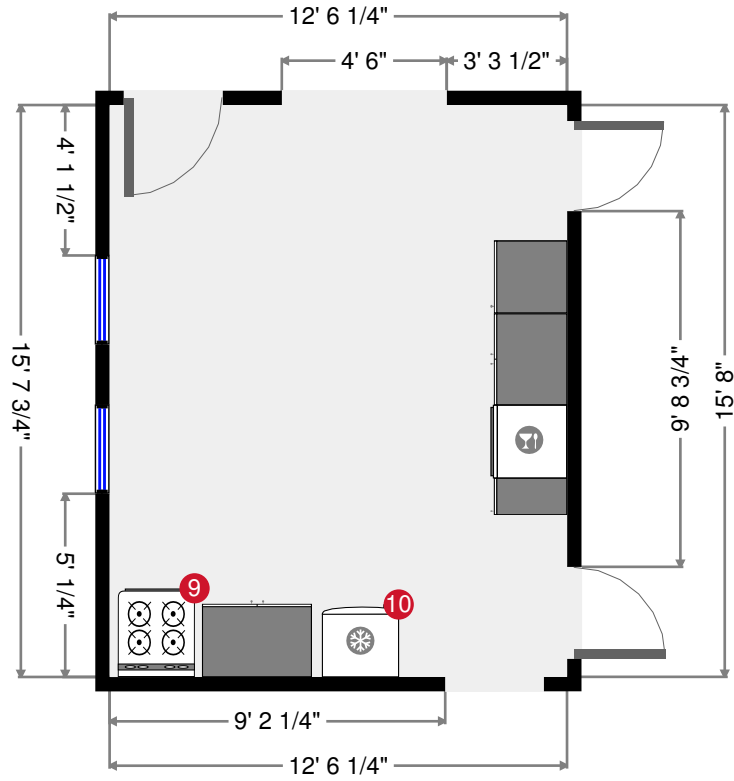
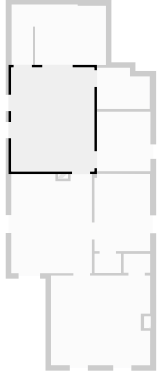
# Closet

Width: 2' 11"  
Length: 3' 11 3/4"  
Area: 11.60 sq ft  
Perimeter: 13' 9 1/2"

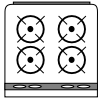


# Kitchen

Width: 12' 6 1/4"  
 Length: 15' 8"  
 Area: 195.76 sq ft  
 Perimeter: 56' 3 3/4"



9



Gas Stove

- Height: 2' 11 1/2"

10



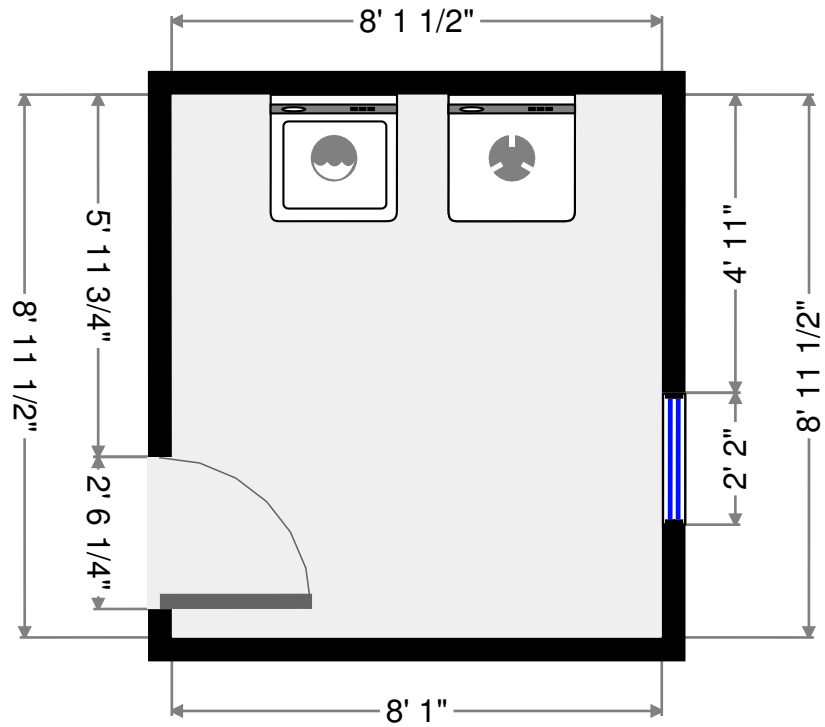
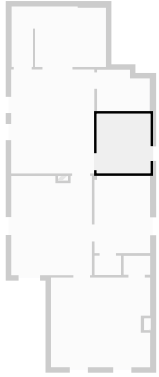
Single-door Refrigerator

- Height: 4' 6 3/4"



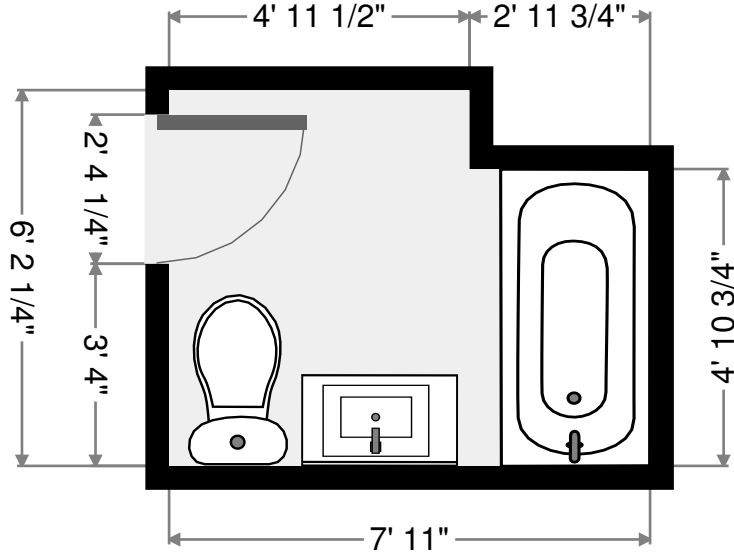
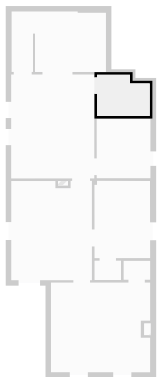
# Laundry Room

Width: 8' 1 1/2"  
 Length: 8' 11 1/2"  
 Area: 72.44 sq ft  
 Perimeter: 34' 1"



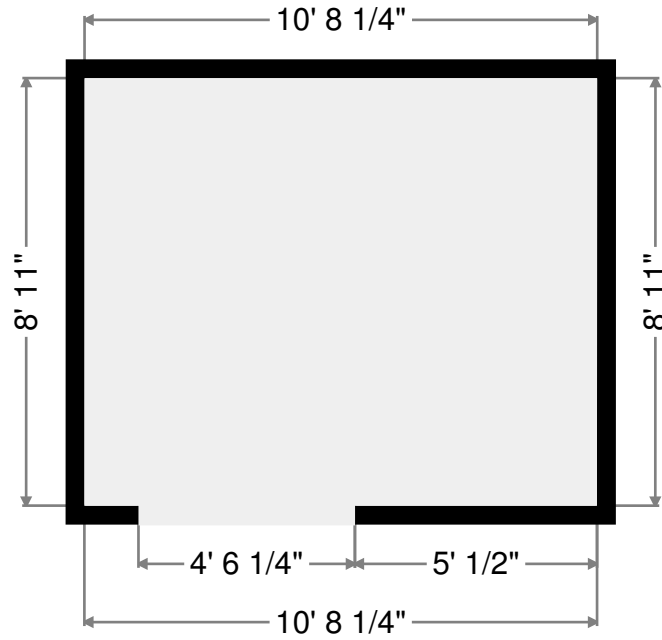
# Bathroom

Width: 6' 2 1/4"  
 Length: 7' 11"  
 Area: 45.33 sq ft  
 Perimeter: 28' 3 1/4"



# Nook

Width: 8' 11"  
Length: 10' 8 1/4"  
Area: 95.22 sq ft  
Perimeter: 39' 2 1/4"



# Stairway

Width: 9' 1 1/4"  
Length: 9' 11 1/2"  
Area: 51.69 sq ft  
Perimeter: 38' 1"

